



Bargaining Update

Now is the time to show your support for a better contract and lower fees! Our next bargaining session is this Tuesday, with a third next Wednesday.

Last week we had 24 grads come to the first bargaining session. Both teams agreed on ground rules for negotiations, exchanged a list of Collective Bargaining Agreement Articles each party would like to open, and provided introductory overview of proposals and positions for negotiations.

OSU's lead negotiator, Jeri Hemmer, stated that OSU would like to resolve issues surrounding Article 8 in this venue as both parties have agreed there are problems with certain of its procedures. Jeri also stated that the Letter of Agreement on Fees was an important issue as OSU moves toward differential tuition, and that "We've been convinced more by the Graduate School than by the union [that fees are an important issue]."

OSU's team reminded CGE of the current economic state of OSU: faculty are taking furloughs, classified staff are taking furloughs for next 2 years, economic situation is better but still not good with the passage of Measures 66 & 67, salary freezes and prohibitions on hiring outside the university, cited Dr. Sabah Randawa's address to Faculty Senate on Feb. 11; also stated that President Ray would thank us for our support of OSU's goals, but that he has given OSU 15 years to meet those goals.

For more information on bargaining team status and session outcomes, be sure to visit the CGE blog site (www.cge6069.org) and read the posts by Rob Hess and the new, live [twitter feed](#) of the bargaining session (<http://twitter.com/CGE6069>).

CGE chose to open these articles:

- * Article 2, Recognition
- * Article 9, Appointments
- * Article 11, Salary
- * Article 12, Tuition Waiver
- * Article 28, Health Insurance

OSU chose to open these articles/letters:

- * Article 8, Union Rights
- * Letter of Agreement on Fees
- * Letter of Agreement on Differential

UPCOMING EVENTS

• Bargaining Sessions

Tuesday, February 23rd, 2010

3 - 5 PM

Westminster House

Wednesday, March 3rd, 2010

2 - 4 PM

Westminster House

• AFT-Oregon Convention

April 17th & 18th, 2010

Sunriver, OR

• Spring Break!

March 20th - 28th, 2010

• Executive Council Meetings

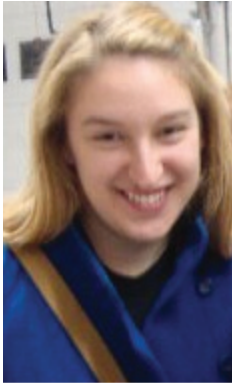
Weekly @ CGE office

10:00 AM

Everyone's welcome

Winter General Membership Meeting Recap

We announced a new officer!
Michelle Zellers was appointed to the position of VP of Organizing. The other recently vacant officer position of VP Secretary/Treasurer is currently held by the previous officer Angela Brandt until we can find her replacement.



Michelle Zellers, VP of Organizing



Left, Dennis Dugan. Right, Andrew McFadden of Geosciences.



CGE President John Osborne takes nominations for delegates to the AFT-OR Annual Convention.

We also voted for delegates to travel to Sunriver, Oregon this April for the AFT Oregon Convention. These lucky delegates will participate in the discussions and decisions that affect local unions around the state.

Our current membership numbers:
(As of January)

Full	280
Associate	96
Total	376

(After Winter Membership Drive)

Total	~ 405
-------	-------



CGE President John Osborne addresses members at the GMM

Legislative Candidate Interviews



AFT-Oregon, in conjunction with the Oregon School Employees Association, will soon be conducting candidate interviews of legislative candidates for the upcoming legislative cycle. AFT-Oregon uses these interviews to help decide who to endorse, and will ask a series of questions based on AFT's priorities, including where legislative candidates stand on graduate employee fees.

Interviews for Oregon Senate District 8 and House Districts 15 and 16 will be held on **Monday, March 15th, 2010, from 6-8:30 PM at the Linus Pauling Middle School Library at 1111 NW Cleveland Ave.** If you are interested in attending the candidate interviews and asking questions of the candidates, please contact Marcus Swift at MarcusS@AFT-Oregon.org.

Grievance Update

\$34 Summer Fee -

CGE submitted a brief (summary of respective case) to an arbitrator on December 10th and we now have the arbitrator's response. In short, graduate employees that were charged a \$34 fee for Summer term 2008 will be awarded a refund. This doesn't apply to years prior to 2008, and we are uncertain of the remedy for years after 2008.

Dues Deduction -

OSU and CGE still have yet to reach an agreement on a procedure to fix the problem of deducting the correct amount owed to CGE from a handful of graduate employees. The problem stems from the allocation of bargaining unit status by departments and a lack of communication by various administrative bodies in OSU. This will likely go to arbitration if the issue is not solved in bargaining.



Summer Health Insurance Paperwork Deadlines!

As of now we will continue to have 50% of our summer health insurance and admin fees covered by our departments. The SHS requires that you fill out a COBRA notification and a Student Health Enrollment form. This will give grads the same coverage as with PacificSource and unfortunately require you pay 100% of premiums for dependents as with PacificSource.

- Deadlines:
 - If not on assistantship for Spring and Summer Terms
 - Feb. 12th - Student Health Enrollment Form
 - April 29th - COBRA Notification
 - If not on assistantship for Summer Term
 - May 7th - Student Health Enrollment Form
 - ? - COBRA Notification



Contact Erin Palmer at SHS for more info (Erin.Palmer@oregonstate.edu), 541-737-7568

AFT Membership Cards

Shortly members will begin receiving their new AFT membership card at their home addresses. Cards are being mailed by state and all cards are expected to be in the hands of members no later than March 31, 2010. Each card will contain the member's name; your local's name and number, along with each member's unique identification number. This unique ID will be each member's key to accessing AFT+ member benefits online which, effective January 2010, will be accessible only through www.aft.org/members.



Frequently Asked Questions:

Q: What benefits come with the card?

A: All AFT members and affiliate staff have exclusive online access to AFT+ member benefits programs, which include voluntary insurance plans, credit card programs and mortgage services, as well as hotel, car rental and entertainment offerings. Members and affiliate staff can participate in the AFT Advantage, a program that gives members online discounts and privileges at a wide variety of retailers, restaurants and local merchants.

Q: How do members validate their new membership card?

A: There are two ways to validate the AFT membership card. 1. Go to www.aft.org/members using the AFT member number on the card to validate it or 2. Call 1/888/238-5646 select option 1.

Q: Why should members validate their AFT membership card?

A: Validating the membership card will make AFT members eligible to win great prizes and will allow members to update their demographic and e-mail information. This information can be shared with locals, upon request, allowing locals to keep in touch with members.

If you have a question about your membership card, email AFT+ Benefits Coordinator Susan Miller at susanm@aft-oregon.org.

Member's Voice Section

Given the amount of space in a monthly (?) newsletter and the amount of pertinent information that might be of interest to the membership, there is generally about half to a full page of space that needs to be filled. In the past we have used that space for messages from officers and members of the month. However, in the interest of keeping things about the grads who make up the union, we would like to try an opinion section in future editions of the CGE newsletter. Topics may range from political to personal, serious rant to comedic satire.

I want to make an open call to invite any CGE members that are interested in voicing their opinion to fellow members through the newsletter medium. The only restrictions are a one page maximum limit and a respectful content. The CGE officers will publish based on submission date and the mentioned restrictions.